

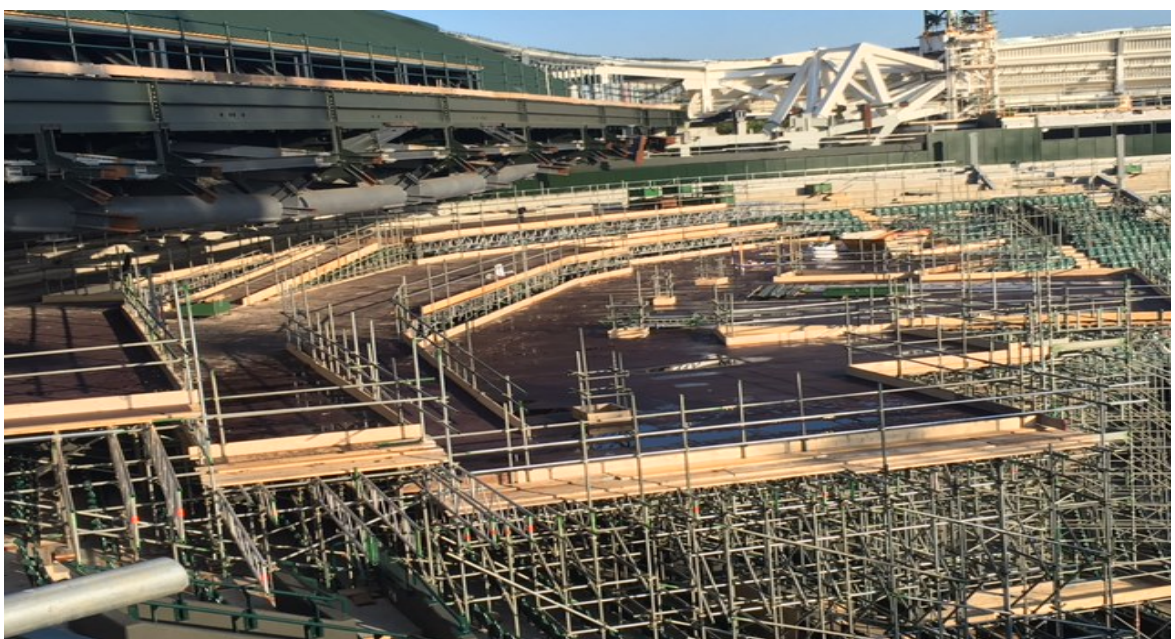
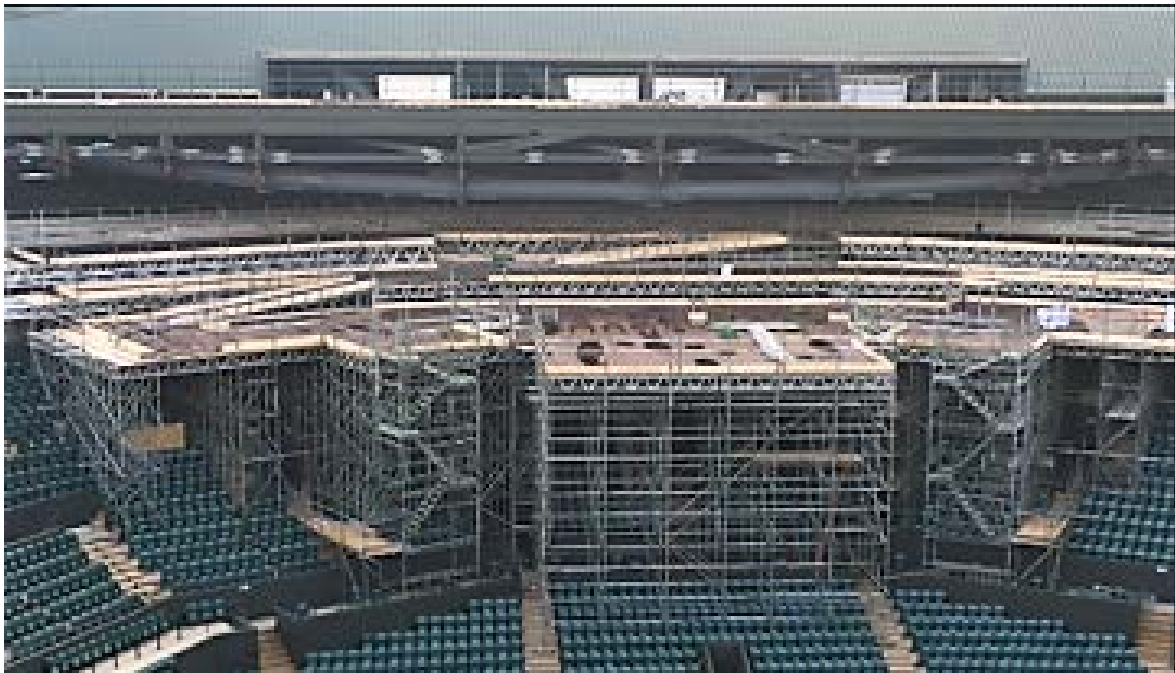
We were recently approached to supply Plywood for a very prestigious project at Wimbledon Tennis Club in London.

Court one is currently going through the process of having a roof fitted similar to the one on Centre Court but as you can imagine that is at quite a height and due to the seating having a slant for viewing the court, how to go about this posed a challenge.

The solution to that was to build a structure that enabled access to the top of the court and we were more than pleased to provide the Plywood to do this.

The Plywood we have provided is Russian Birch Mesh Faced Plywood and so far, we have provided 1200 boards with another 528 to go!

Have a look at this astounding structure.....





As you can see this has taken quite a tremendous amount of work to build this and we were honoured to support this and more than happy to do our bit to keep the players dry in our unpredictable weather!

We can support any project requiring Plywood so if you have an upcoming project please get in contact with us, you can find our contact details on the contact us page.